



# Friends for Life

The Eppendorf *epMotion*® Series:  
Discover the variety of automated liquid handling



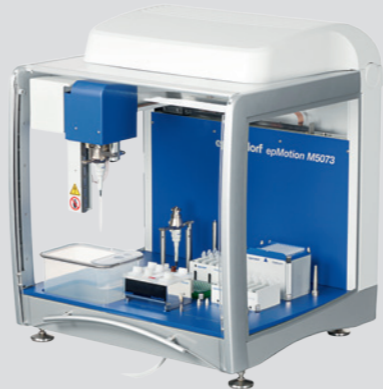
Enjoy the new epMotion® series through easy to use and flexible automation of your applications and highly reproducible and accurate pipetting results.

# »Automation means precision and reduced workload in one — discover the possibilities for your lab.«

With the new Eppendorf epMotion® family of automated pipetting systems, you will see things in a new light. All your routine pipetting tasks, whether small or large, will be automated with more accuracy and reproducibility than you might have experienced with manual pipetting. Learn how simple it is to switch from manual work to automation.

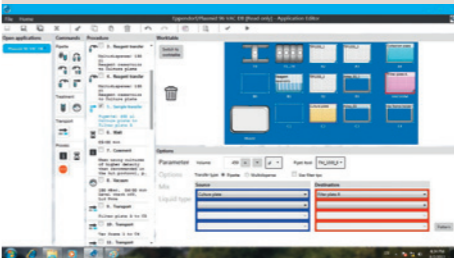
**Robust hardware**

- > epMotion systems are available in 3 sizes, all designed with minimal footprint
- > Self checking robotic system, that reduces startup time
- > High precision dispensing tools for 1 to 1000 µL
- > Optical sensor verifies worktable loading before the run



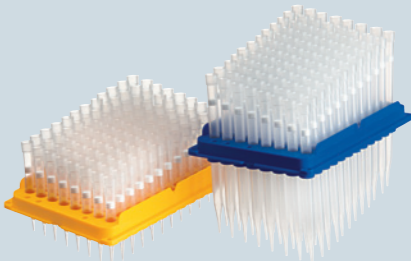
**epBlue™—Intuitive Software**

- > Enjoy the new concept of user guided software assistants to start right away
- > Learn all the programming flexibility you need in hours, not days
- > Upgradeable to barcode tracking and GLP/GMP software versions



**epMotion Accessories , Consumables & Services**

- > Get great diversity with large portfolio of accessories
- > As an open platform epMotion works with your favorite labware
- > High quality consumables guarantee high accuracy and reproducibility of your results
- > Choose our premium service to support and maintain your equipment operation



# Eppendorf epMotion® Portfolio



## Eppendorf epMotion® 5070

Our smallest member of the epMotion family is the most compact solution for accurate and reproducible automated pipetting. This makes the epMotion 5070 a perfect match for any routine application such as serial dilutions, reagent distribution, sample transfer from tubes to plates, and sample normalization.

### Product Features epMotion 5070 / 5070f

- > 4-position worktable and 3 virtual positions
- > Small footprint of 65 × 48 cm<sup>2</sup> fits on small lab bench
- > Space saving touch screen tablet
- > Automatic tool exchange for 2 tools
- > Reuse tip capability



## Eppendorf epMotion® 5073

These automated pipetting systems are uniquely tailored for PCR setup and nucleic acid purification, yet retain the flexibility that allows their use as open platforms for diverse automated liquid handling applications. They automate and simplify what are traditionally complex, labor intensive pipetting tasks, saving time and improving the reliability and reproducibility of results.

### Product Features epMotion P5073 / M5073

- > 6-position worktable
- > Application specific software assistants, tools and accessories included
- > Option for gripper, 1 thermal module\* or Eppendorf 3D-MagSep™ module\*\*
- > CleanCap option for UV decontamination and HEPA air filter

\* Available only with P5073  
 \*\* Already included with M5073



## Eppendorf epMotion® 5075

With 12 to 15 worktable positions and many additional features the epMotion 5075 versions have a higher application flexibility.

The epMotion 5075 is the ideal solution for advanced liquid handling demands. It offers the same outstanding accuracy and precision as epMotion 5070 & 5073. All its features make the 5075 versions to excellent tools for demanding, small-volume applications such as next generation sequencing, real-time PCR set-up or magnetic bead based purification, as well as cell assays or any routine pipetting task.

### Product Features epMotion 5075I / 5075t / 5075v / 5075vt / 5075m

- > Up to 15 worktable positions
- > MultiCon PC controller with simulation, network and software upgrade options
- > Automatic exchange of 4 dispensing tools
- > Option for gripper and 1–3 thermal modules
- > System control by touch, mouse, keyboard or network
- > Available ThermoMixer®, Vacuum manifold and magnetic separation options
- > Available as CleanCap versions

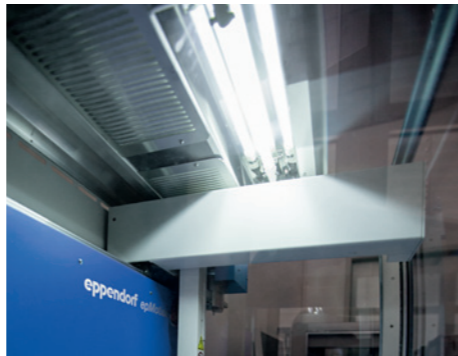
# Eppendorf epMotion® Feature Overview



**Optical Sensor**  
Checks worktable loading for tips (type and number), labware type, and even liquid volumes in vessels for safe operation



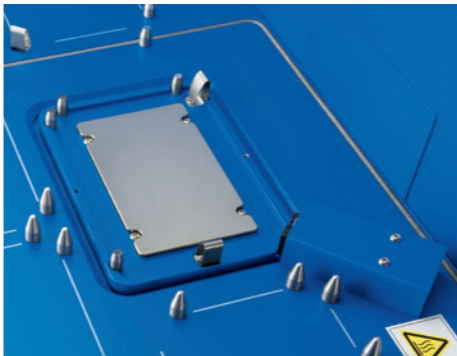
**Liquid waste tub**  
Extra reservoir with large working volume can be mounted in waste box of epMotion



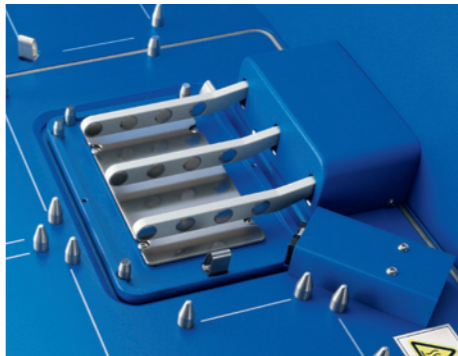
**CleanCap**  
with UV lamp for decontamination and HEPA filter for clean air inside. Optional for new epMotion 5073 & 5075 versions

**Accurate Pipetting Performance**  
Eppendorf air cushion & free-jet pipetting technology together with dedicated epT.I.P.S. Motion guarantee high precision and accuracy in 1 to 1000 µL volume range, always contact free to minimize cross-contamination.

**Flexibility of Labware Choice**  
Use the labware you use today with a growing data base of >1200 labware files. Tubes range from 0.2 mL PCR to 50 mL conical tubes. Plate format of 6 to 96 and 384 wells supported. Micro plates and deepwell plates from various suppliers with special adapters for cooling and heating in our large portfolio of accessories can be applied.



**ThermoMixer®**  
Fully integrated ThermoMixer with 2D Mix-Control improves yield and application results, e.g. resuspending bacteria pellets or magnetic beads. Peltier element for heating and cooling of sample and/or reagents



**Eppendorf 3D-MagSep™ Technology**  
Combination of magnetic finger module and ThermoMixer facilitates magnetic separation, mixing and temperature control in one location



**Integrated Vacuum Station**  
Loaded and unloaded with the gripper, the vacuum station adapts automatically to any filter plate type. Silent operation of internal pump with no need for extra tubes, wiring or reservoir maintenance



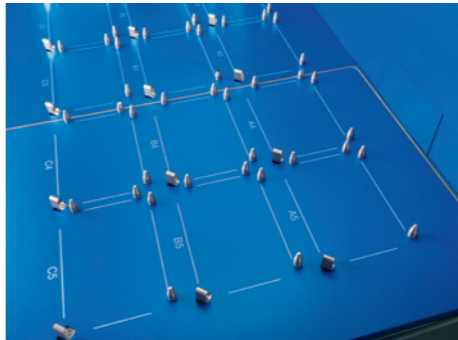
**Dispensing Tools**  
6 autoclavable dispensing tools from 1 to 1000 µL are available for programming; single- or multi-channel; all calibrated compliant to ISO 8655.



**Gripper Tool**  
Allows transport of labware on worktable of 5073 or 5075 versions. Stacking of up to 5 plates is possible.



**Automatic Tool Exchange**  
Program the tools you need for your application, 6 dispensing tools and a gripper. Dependent on epMotion version 2 to 5 tools can be provided on the worktable for automatic exchange.



**Small Footprint - Large Deck**  
With 4, 6, 12 or up to 15 positions in SBS/ANSI format the epMotion family gives you all the flexibility you need for your application

**Easy & Fast Access**  
Control epMotion by touch or mouse with easy programming or application specific software assistants. Fast initialization of the instrument let you start right away without manual teaching or calibration of robotic system

**Housing**  
Completely contained housing including door safety mechanism

# International Users Love epMotion®!

Whether it is genomics applications, like PCR set-up, SNP detection, next generation sequencing, or nucleic acid purification, complex assay set-up or cell culture applications, read what scientists worldwide say about epMotion.

»» The Eppendorf 5075's improvements to accuracy, reproducibility, and throughput has changed how we approach almost everything we do in the lab. In addition, the 5075 was instrumental in the development and validation of our novel HIV phenotyping test. ««

**Richard Gibson**  
Assistant Director · University  
Hospital Translational Laboratory ·  
Cleveland, USA

»» My group has made great use of the epMotion 5073. It provides sufficient flexibility for my group to use routinely for 384 well qPCR setup, enabling us to increase throughput and reduce reagent usage. More importantly, the modular nature of the design and flexibility of the instrument runs, mean we have been implementing in a range of other molecular biology applications that benefit from automation, such as scalable plasmid construction. The ability to upgrade this instrument with gripper arm, temperature control and both single and multichannel capabilities means we are in a good position to adapt rapidly as new protocols are developed. ««

**Dr. Steven M. Pollard**  
UCL Samantha Dickson Brain Cancer Unit · University  
College London · London, United Kingdom

»» We are using our three epMotion 5075 systems already for several years for automated gDNA purification from plant and fungi, PCR setup for routine analysis of fungicide and herbicide resistance genes and other general liquid handling tasks. The epMotion automation has significantly reduced our work load for these assays and made our workforce more efficient, because team members can now focus on downstream applications. We also appreciate the better reproducibility of results and the high flexibility we get with this easy to handle automation systems. ««

**Bernhard Jaser**  
Senior Research Fellow · Agrobiologic Research &  
Consulting · EpiLogic GmbH · Freising, Germany

»» We highly value the epMotion 5075 TMX for its accuracy, easy programing, and it's flexibility in adapting to different protocols and throughputs. We obtain excellent results in our real-time PCR assays and sample library preparation for our NextGen sequencing protocols. ««

**Gisela Mir PhD**  
Head, Molecular Genomics facility · Cancer  
Research · Peter MacCallum Cancer Centre ·  
Melbourne, Australia

»» We are happy to use the epMotion 5070 for our Anti-cancer Drug Screening as it accelerates our pipetting work for viability and apoptosis cell assays to combat a cancer cell line with the reproducibility that we need. ««

**Gilberto C. Franchi**  
Pharmacist research fellow · University  
of Campinas · São Paulo, Brazil

»» epMotion 5075 has been installed in our lab since two years and is working satisfactorily. The system is completely open with respect to labwares and consumables. The features we liked in the instruments being the contact free liquid level sensing, its volume accuracy and low maintenance cost. We also appreciate the support extended by Eppendorf India in our Application setup. ««

**Dr. D. Srinivas Reddy**  
Special project Scientist · PTTC, International Crops Research  
Institute for the Semi-Arid Tropics · Hyderabad, India

»» Our group has made fantastic use of the epMotion 5070 and it now forms an indispensable core of our small and heavily used qPCR facility. Its reliability, accuracy, ease of use has been key to the success of our qPCR experimentation. The ability to accurately and reproducibly pipette low volumes has both increased the quality of our results and kept consumable costs under control. This has meant more results for the same money, always something to bring a smile to the laboratory head. ««

**Dr. Chris Winefield**  
Senior Lecturer in Plant Biochemistry and Molecular Biology · Lincoln  
University, New Zealand

»» epMotion P5073c is a robust system and yet with the flexibility which satisfied our laboratory's multiple functions. ««

**Dr. Masafumi Inoue**  
Group Leader (Molecular Diagnostics  
Group) · Experimental Therapeutics  
Centre (ETC), Agency for Science ·  
Singapore

»» The Eppendorf epMotion 5070 has been installed in our lab and is working satisfactorily. The system has been used to automate some of our assays such as preparation of cDNA, and setting up RTQ PCR assays in 96-well format. In all we are more than satisfied with the performance of the system and support provided by the technical experts. ««

**Dr. M. Padigaru**  
Associate Director – Biomarker  
discovery · Piramal Life Sciences Ltd. ·  
Mumbai, India





# Eppendorf epMotion® 5070

The **epMotion 5070** is our most compact solution for accurate and reproducible automated pipetting. With four worktable positions and small footprint the epMotion 5070 is a perfect match for any routine application such as serial dilutions, reagent distribution, sample transfer from tubes to plates, and sample normalization.

- > 4 ANSI/SBS worktable and 3 virtual positions
- > Automatic exchange of two pipetting tools
- > Small foot print of 65 x 48 cm<sup>2</sup> fits on small lab bench
- > Completely contained housing including door safety mechanism
- > Reuse tip capability
- > EasyCon tablet for touch or mouse control with USB data transfer
- > User guided LH assistant for general liquid handling tasks



Automatic tool exchange for more flexibility of pipetting variations



# Eppendorf epMotion® 5070f

With the **epMotion 5070f** all the benefits of automated pipetting are available for liquid handling tasks inside a cell culture bench or fume hood. Cell maintenance is one of the most repetitive tasks in life science research. The epMotion 5070f allows you to automate key processes such as seeding cells, media changes, or performing assays e.g. cytotoxicity. It enables you to handle 6, 24 or 48 well plate or even denser formats from 96 to 384 wells.

- > Same as 5070, plus
- > Light barrier beam—monitors the closure of the bench hood for safety
- > Pre-programmed cell culture labware
- > Sterile pipet tips available
- > Autoclavable pipetting tools



5070f in cell flow bench



# Eppendorf epMotion® P5073c

**The epMotion P5073—2 systems in one.**  
First, a tailored workstation for automated PCR set-up in 96 or 384 plate format. The new EasyCon tablet and PCR assistant software fulfills the highest expectations for ease of use, guiding the user stepwise through the process.  
Second, a flexible system for automation of labor intensive and complex pipetting tasks with the epBlue software, which addresses diverse liquid handling routines in todays labs. The epMotion P5073 is configured with all accessories and tools required for PCR set-up.

- > Six SBS/ANSI worktable positions
- > Automatic exchange of 2 pipetting tools and gripper
- > EasyCon tablet for touch or mouse control and USB data transfer
- > CleanCap option with UV lamp for decontamination and HEPA filter for clean air inside
- > P5073 has option for 1 thermal module for heating and cooling (0–110 °C)
- > User guided PCR assistant for easy application control
- > PCR set-up accessories included: Thermoblock PCR 96, Rack for 24 Eppendorf Safe-Lock tubes and 2 pipetting tools



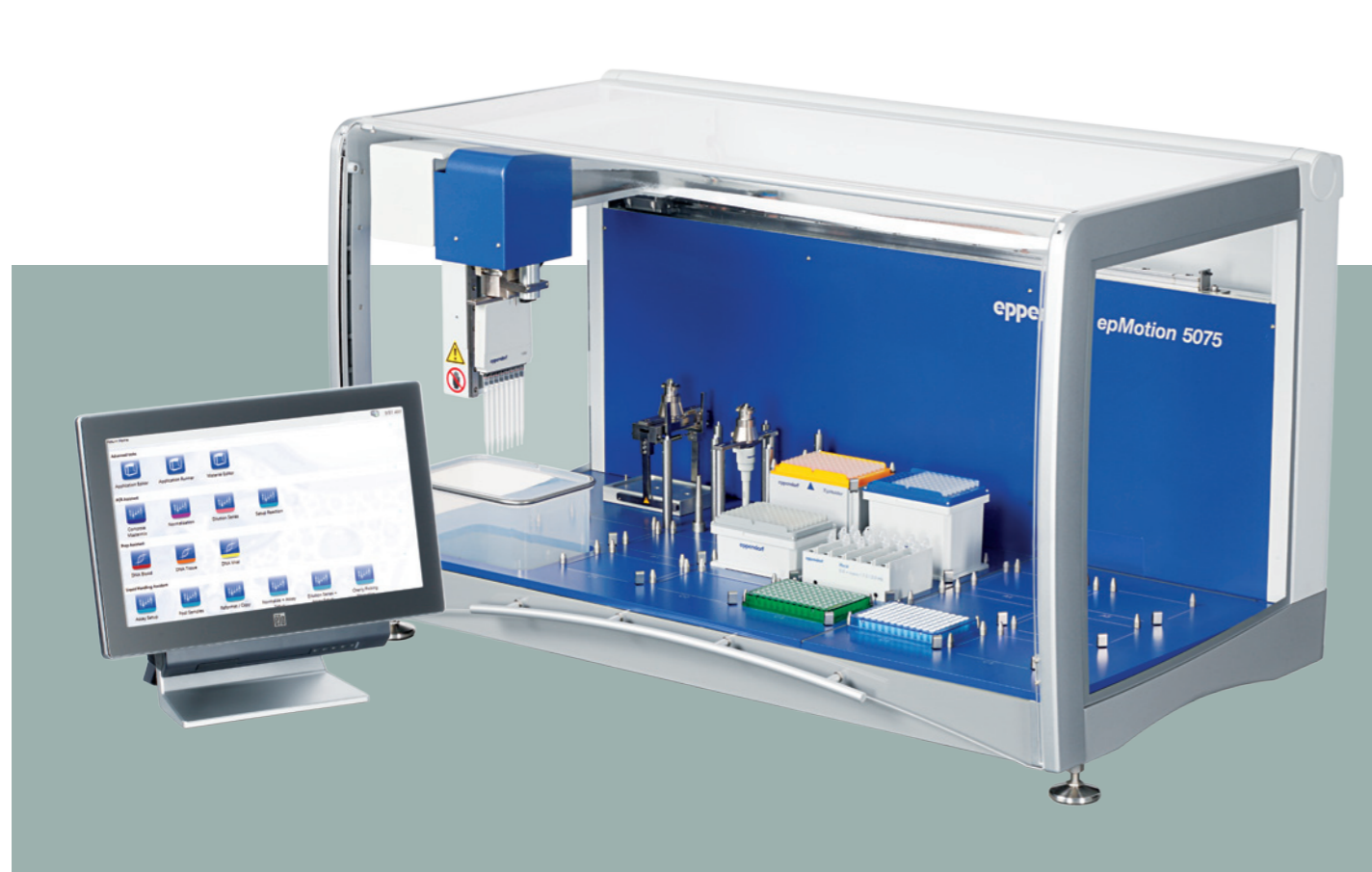
# Eppendorf epMotion® M5073

**epMotion M5073 – nucleic acid preparation and flexibility for more.**  
Use dedicated Eppendorf MagSep reagent kits with the epMotion M5073 for walk away DNA or RNA preparations from 1 to 24 samples from various sources. The EasyCon tablet and Prep assistant software guide step by step through the easy and fast automation process.  
The new reuse tips feature and epT.I.P.S. Motion SafeRack tips can help to reduce tip consumption during wash steps.  
More flexibility and complexity for various liquid handling tasks can be programed with the established epBlue software that is installed on the EasyCon as well. Automate tedious, multi-step pipetting tasks in minutes, like plate reformatting, serial dilutions, sample transfer, normalizations, pooling, hit-picking, assay set-up or cell handling.

- > Same as P5073, plus
- > Eppendorf 3D-MagSep module for magnetic separation
- > Separate Liquid Waste
- > Nucleic acid purification accessories included: Rack 24 PrepRack, Reagentrack and TS 50 & TS 1000 pipetting tools
- > User guided Prep assistant for easy MagSep reagent kit applications

Combination of magnetic finger module and ThermoMixer facilitates magnetic separation, mixing and temperature control in one location





## Eppendorf epMotion® 5075I

The **epMotion 5075I** is the perfect solution for more complex pipetting tasks. It offers the same precision and accuracy as the epMotion 5070 & 5073, making it the ideal tool for demanding applications and higher throughput.

The 15 positions and the automatic tool exchange expand the application range to handle complex patterns and higher sample numbers. With heating and cooling and the gripper option, the epMotion 5075I is one of the most flexible automated liquid handling systems available.

- > 15 SBS/ANSI deck positions
- > Automatic exchange of 4 pipetting tools and gripper
- > Plate stacking – 5 microplates or 2 deepwell plates can be stacked by the gripper
- > 3 thermal module options for heating or cooling of samples or reagents

- > CleanCap option – UV lamp and HEPA filter for decontamination and clean air conditions
- > MultiCon PC controller to run preinstalled epBlue software by touch or mouse and keyboard
- > Upgradable for barcode tracking and GLP/GMP software versions
- > LH assistant for general liquid handling tasks

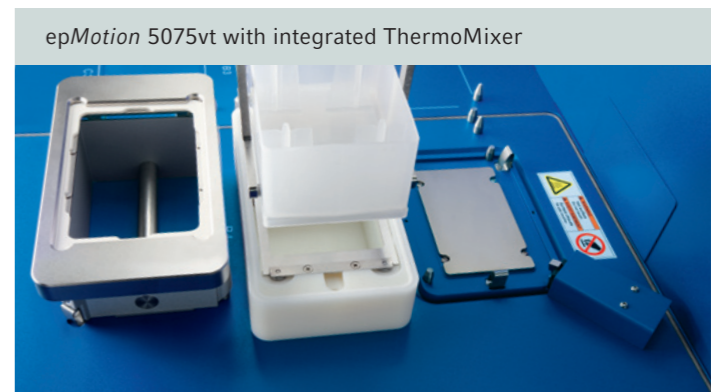
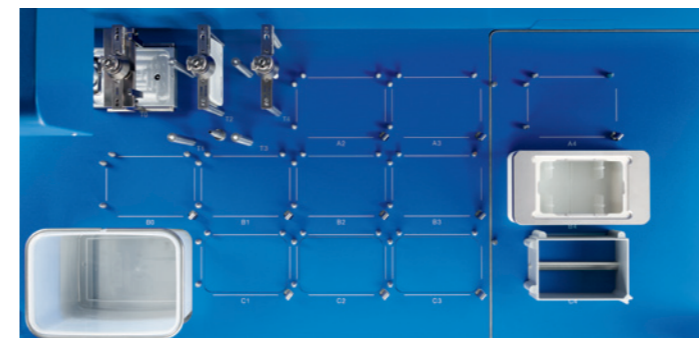


## Eppendorf epMotion® 5075v

The **epMotion 5075v** is all about productivity. With its integrated vacuum station the epMotion 5075v allows true walk-away automation of purification protocols that rely on vacuum filtration.

- > Same as 5075I, plus
- > 12 SBS/ANSI deck positions
- > Integrated vacuum pump—silent operation, no tubing, wiring, and reservoirs to maintain

- > Vacuum station is fully integrated and automatically adapts to filter plates controlled by software
- > Gripper for plate & labware transport
- > 3 thermal module options (2 in case of 5075vt)
- > Also available as 5075vt version with integrated ThermoMixer

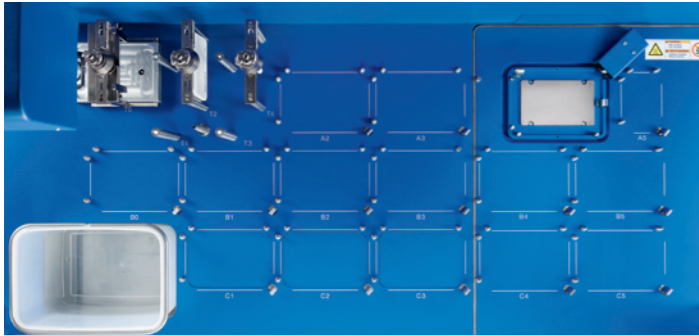




# Eppendorf epMotion® 5075t

**The epMotion 5075t** includes an integrated ThermoMixer module to mix, heat or cool samples and reagents. The ThermoMixer can be loaded and unloaded with the gripper and pipetting to the mixer is possible before and after mixing steps. It is fully software controlled enabling pipetting onto other worktable positions while the mixer is in operation.

- > Same as 5075I, plus
- > Integrated ThermoMixer with <sup>2D</sup>Mix-Control technology
- > Temperature control range 15 °C below RT to 95 °C
- > Automatic securing of labware for mixing up to 2000 rpm
- > 14.5 deck positions, 14 SBS/ANSI plus small position for special reagent reservoir rack (3 reservoirs)
- > 2 thermal module options



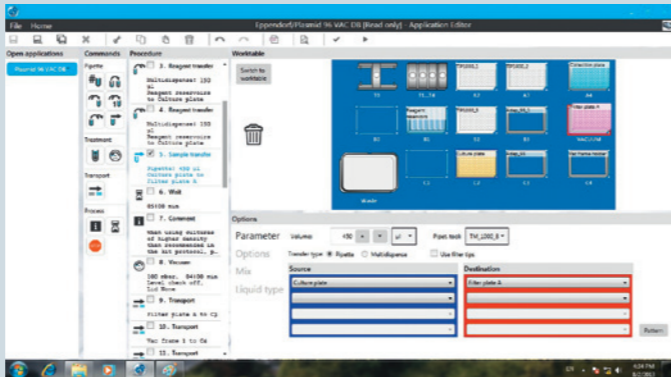
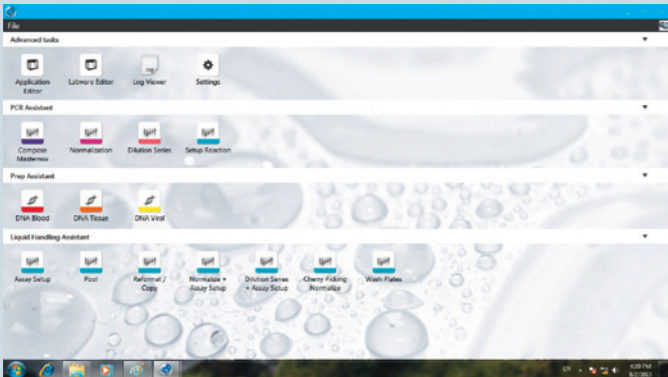
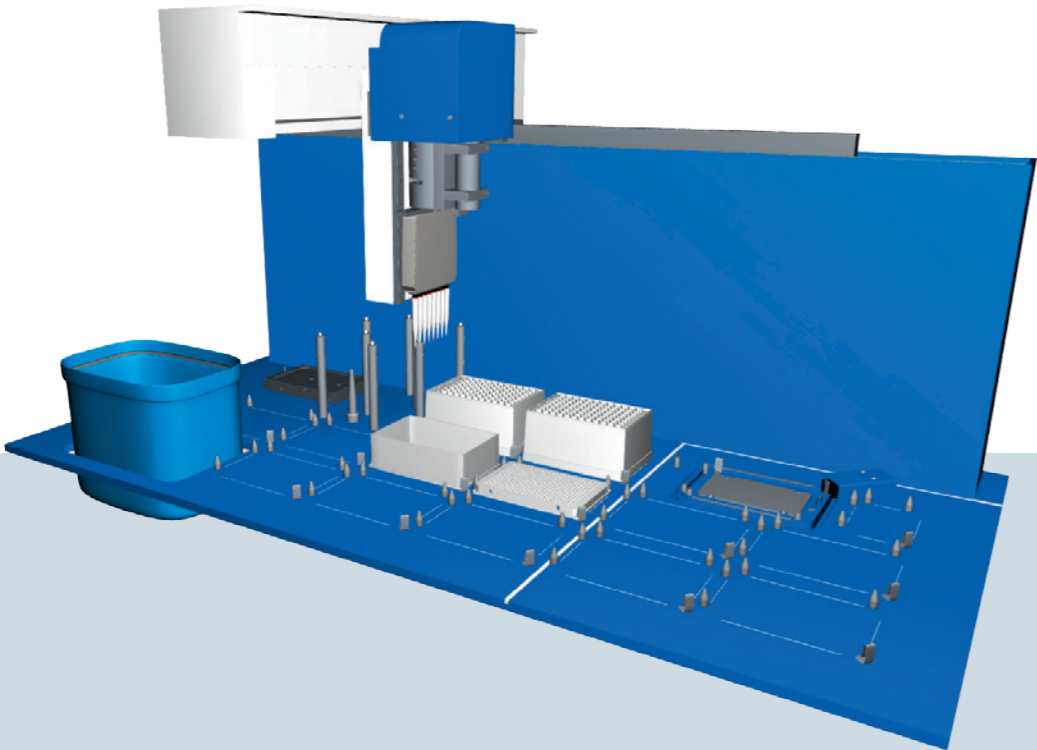
# epMotion® Software—Simplify Your Programming



**epBlue—intuitive operation and programming**  
Simple and clear. epBlue is pre-installed on every epMotion system and guides you through your everyday pipetting tasks: Choose your objective in the home section and follow the epBlue commands from left to right with guided menus and the

consistent, touchable structure. With the unmatched ease-of-use of epBlue, even complex methods can be generated in minutes.

- > Intuitive graphical user interface
- > Pattern recognition for easy programming of complex patterns in 96 or 384 wells
- > Large labware data base—use almost any possible labware
- > Liquid classes—for highest performance of pipetting various liquids
- > CSV import of files for normalization and cherry picking
- > Safe operation through 3D run simulation. Before starting your application, you can simulate the run. (only MultiCon versions)
- > User management (only MultiCon versions)



# Upgrades for the Features You Need



**epBlue GxP—Solution for automated pipetting according to 21 CFR part 11 regulations**  
The GxP solution was developed according to GAMP 5 and tailored for organizational and process requirements of 21 CFR part 11, 58, 211 and 820, GLP, GMP and GCP.

The epBlue GxP solution consists of the epMotion automated pipetting system, software and services that are designed to significantly shorten the timeline of your process validation and qualification. Eppendorf as a supplier has already taken care of the major part of the regulatory required system validation and qualification. Thus the user can focus on their part of the application validation.

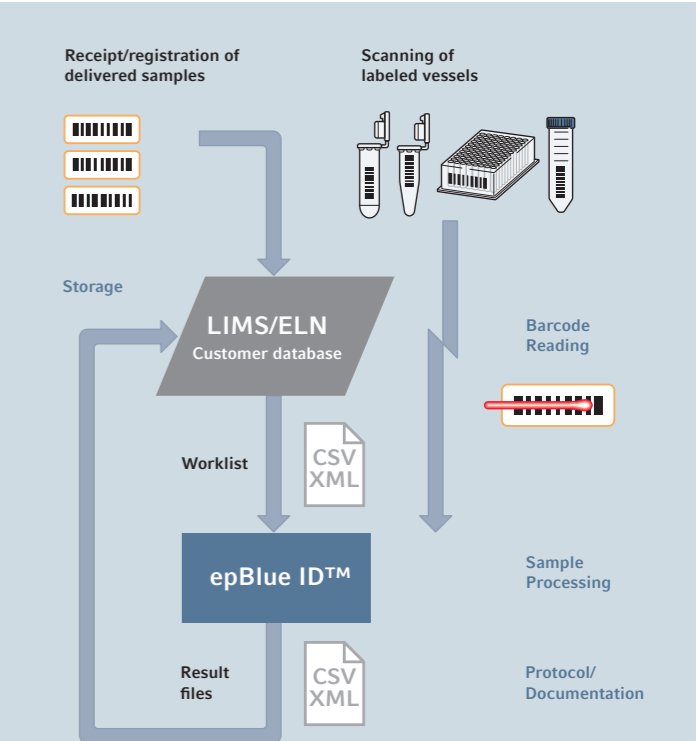
- > Complete electronic documentation
- > User level management and access control
- > Audit trail and log file
- > Revision management
- > Configurable workflow management
- > Export and archiving of digitally signed documents
- > epBlue ID tracking using bar codes (optional extension)



**epBlue ID—Secure barcode scanning—tracking—documentation**  
epBlue ID software module allows for safe data exchange with laboratory information management systems (LIMS) and simplifies external communication. The barcode scanner enables the user to record barcodes on all tube

types and microplates. Reagents can be documented with type and lot number. After manually scanning the barcodes, epBlue ID will store the IDs in its database from which data can be verified at any time. A result file containing sample IDs and their final location is generated by epBlue ID when the liquid handling process is completed. The result ID list can then be exported to a network drive and uploaded to a LIMS.

- > Visual guidance of the scanning process
- > Documentation of reagent type and batch
- > Compatible with LIMS generated worklists



# Ease of Use and Flexibility

The Eppendorf EasyCon tablet is optimized for simple and comfortable access to liquid handling automation. Its space saving size is designed especially for the smaller members of the epMotion family, 5070 & 5073. It has a large color display and is operated by touch or mouse control. The key feature of the Eppendorf EasyCon tablet however is its flexibility with pre-installed software assistants for easy and fast application runs and the epBlue studio software for programming more complex liquid handling tasks.

- > Touch screen or mouse control
- > Pre-installed software assistants
- > epBlue software
- > 4 × USB 2.0 ports for data transfer
- > Data backup
- > CSV and XML file exchange
- > No extra power supply needed



The Eppendorf MultiCon PC versions define a new dimension in ease-of use and safety. As premium product, an industrial PC is included which ensures maximum working reliability by standardization and the multiple quality checks each individual PC has undergone. The MultiCon controller fulfills high expectations at best performance for the epMotion 5075 versions.

- > Simplify—Large touch screen or mouse and keyboard control
- > Network interface allows the remote control of epMotion via direct Ethernet connection
- > Pre-installed epBlue software & assistants
- > CSV and XML file exchange via USB or LAN
- > Safe operation due to data-base repository
- > Run simulation with 3D-view on the workstation
- > 5 USB & 2 Ethernet ports
- > Upgrade option to epBlue ID software
- > Development in compliance to GAMP 5
- > Upgrade option to epBlue GxP software



# User Guided Programming for Everyone

**The innovative Eppendorf software assistant concept is a new level of user friendly programming of automated liquid handling systems.**

With a few simple questions the user is guided through the programming of the automation process. It is a quick and easy way to use epMotion and start methods with only little training efforts. Various application specific assistants are available for PCR set-up, nucleic acid preparation or general liquid handling, and Eppendorf will continuously extend the range of assistants in the future.

The new software assistants are so intuitive that any lab member can start automation without extensive programming expertise now.

- > Quick access by desktop icons
- > User guided step-by-step programming
- > Settings are stored for next use
- > Methods can be saved for further modification in epBlue software
- > 3× Prep assistants
- > 4× PCR assistants
- > 7× LH assistants

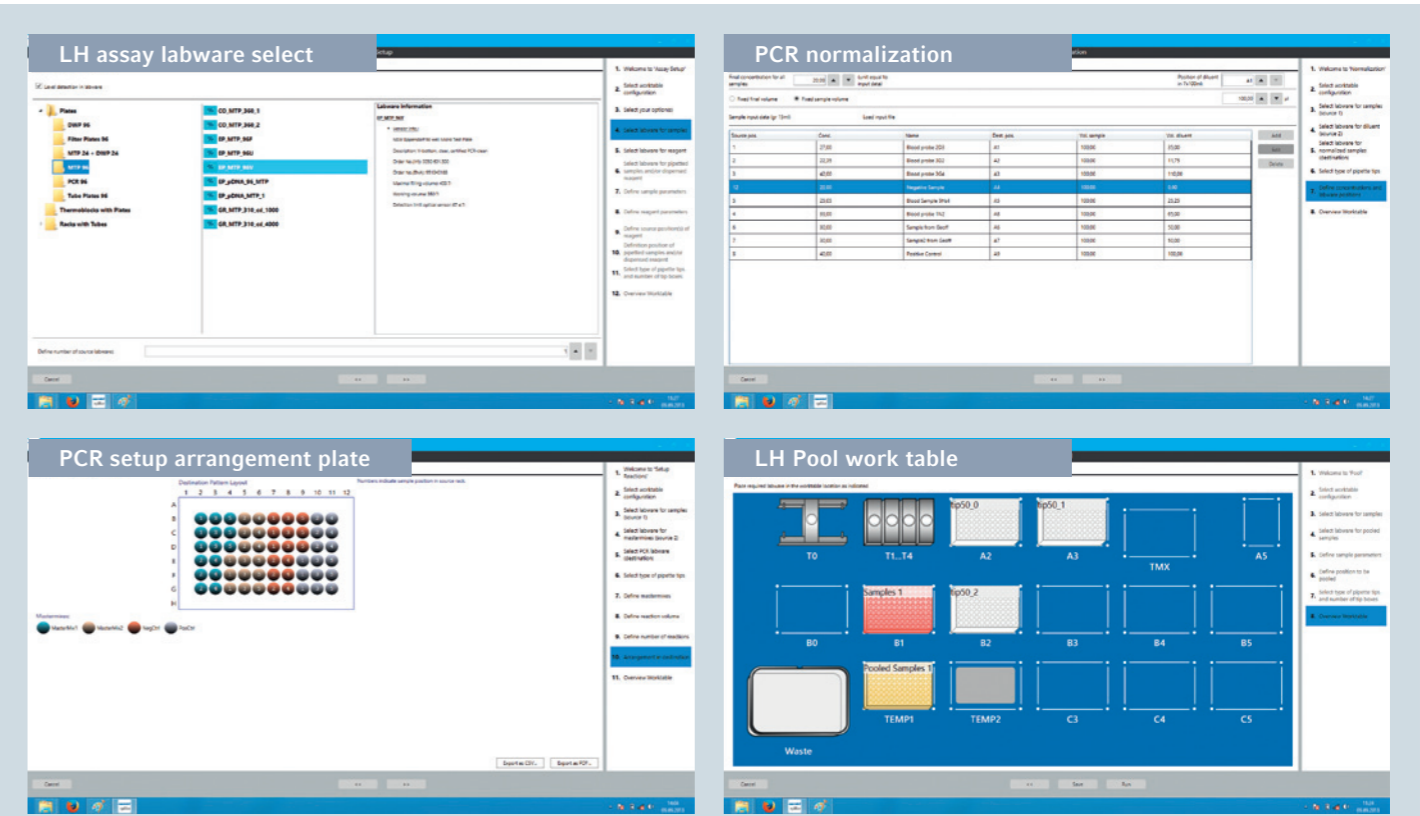
**The 4 PCR assistants are designed to streamline and automate the whole PCR set-up workflow:**

- > Compose Mastermix
- > Normalize Concentrations
- > Create Dilution Series
- > Setup Reactions

**The 3 Prep assistants** provide a step-by-step guided workflow of automated nucleic acid purification with the MagSep reagent kits on the epMotion M5073 or 5075m. In short; unscrew caps from reagent tray, select number of samples, select labware for purified DNA/RNA, choose elution volume between 25 to 200 µL and start run.

**The 7 LH assistants facilitate easy access to general liquid handling tasks**

- > Reformat
- > Normalization
- > Wash
- > Assay set-up
- > Cherry picking
- > Dilution series
- > Pool samples



# Accuracy and Reproducibility Delivered

## epMotion pipetting tools

- Based on Eppendorf classic air cushion pipetting technology
- > Free-jet pipetting, no tubes, no wires, no air bubbles to minimize cross-contamination
  - > Excellent pipetting precision, below 2 % CV at 1 µL\*
  - > Volume range: 1–50 µL; 20–300 µL and 40–1000 µL
  - > Single or 8-channel
  - > Autoclavable & easy to maintain
  - > Automatic calibration warning
  - > ISO 8655 compliance

\*Eppendorf application note 168: »Evaluation of the Eppendorf epMotion® Pipetting Tools using the Artel MVS®.«



## epT.I.P.S.® Motion

- Special tips for use in automated systems. Each tip is inspected for straightness prior to packaging. This ensures a perfect handling of 96- and 384-well micro- and PCR plates
- > Color-coded tray for easy volume identification
  - > Non-carbonized, pure virgin polypropylene, both tip and box are recyclable
  - > Standard, filter, and sterile tips available
  - > PCR clean quality grade for filter tips
  - > Also available as eco-friendly reload system



## Re-use tips feature

- The new epMotion systems can re-use tips as e.g. economical choice for multiple wash steps of the same well. Here special epT.I.P.S. Motion SafeRack tips are recommended
- > Individual compartments to avoid cross-contamination between used tips
  - > Available as standard and PCR clean quality for 50 and 1000 µL



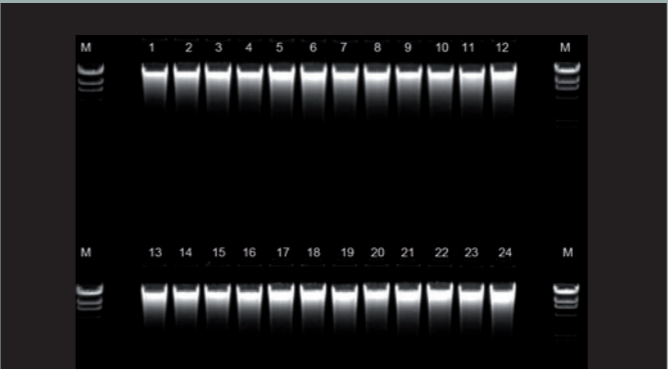
# Dedicated Reagents Kits

## Eppendorf MagSep reagent kits for automated nucleic acid purification of 1 to 24 samples—free-up your time for scientific work

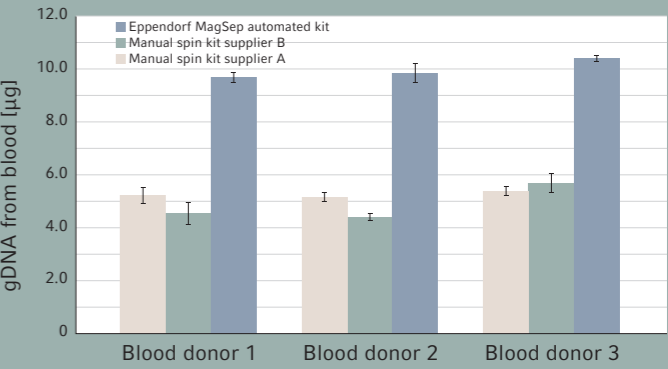
Whether your sample is tissue, cells, bacteria, blood or cell-free body fluids, the MagSep Tissue gDNA kit, MagSep Blood gDNA kit or MagSep Viral DNA/RNA kit are your smart solution for automated nucleic acid purification. The kits are designed for rapid automated small-scale preparation of highly pure nucleic acids based on robust magnetic bead separation using the epMotion M5073 or 5075m. All reagents and tubes that are needed for extraction and elution for 96 samples are provided (e.g. Proteinase K and all buffers).

The ready to use reagents come in special trays for 1 to 24 preparations. Just open the vessels, place the tray on the worktable and epMotion will do all the pipetting. If less than 24 samples are run, the tray can be stored for later use.

- Benefit from minimal hands-on time with ready to use reagents, special epMotion reagent tray and easy software assistants. Get superior yield and purity versus manual or other automation methods by optimized chemistry and 3D-MagSep technology with the epMotion (typical ration A260/280 is 1.8 to 1.9) which guarantees reliable and reproducible results in various downstream applications, like genotyping, sequencing, real-time PCR, other enzymatic or chemical reactions.
- > Automatic recognition of kit type and available reagents
  - > Variable use of 1 to 24 sample reagents per tray and intermediate storage possible
  - > 25 to 200 µL variable choice of elution volume (concentration vs. yield)
  - > Eppendorf DNA LoBind Safe-Lock tubes included for maximum DNA recovery




Gel analysis of 24 mouse tail samples purified with MagSep gDNA tissue kit; typical yield 10 µg high molecular weight DNA out of 10 mg tissue; 7.5 µL of 75 µL loaded on gel.



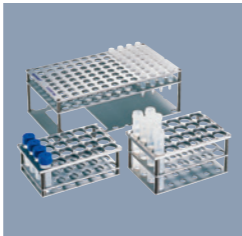
Typical yield of 9 µg gDNA from 200 µL of blood purified via MagSep gDNA blood kit versus manual process of purification (n=3).

# Automate All Your Favorite Labware —epMotion® Accessories


Whether 0.2 mL PCR tubes, 1.5, 2 or 5 mL test tubes, 15 or 50 mL conical tubes, six-well plates, 96/384-well microplates, PCR plates, or deep-well plates—with epMotion accessories, you can handle it.




**ReservoirRack**  
Enables positioning of up to 7 reagent rack modules or reservoirs with 30 mL or 100 mL filling volume.



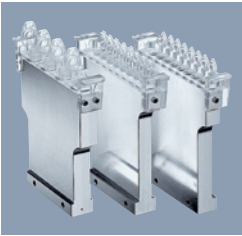
**Racks for single test tubes**  
For micro test tubes, glass, or plastic tubes. Fifteen different formats available.



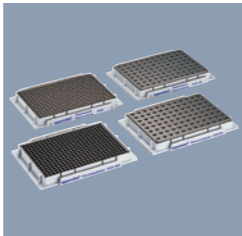
**ReservoirRack 3**  
Small rack for epMotion 5075m and 5075t versions for 3 additional reagent or liquid waste reservoirs (30 or 100 mL).




**Thermoracks for 24 × Safelock 0.5/1.5/2 mL tubes**  
Temperature-controlled when used with a thermal module. Available also for Cryotubes and as version for ThermoMixer.



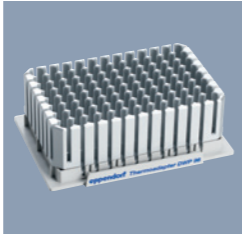
**ReservoirRack modules TC**  
Eight module sizes are available to use tubes from 0.2 mL PCR, 5 mL to 50 mL tubes. Temperature-controlled when used with a thermal module.




**Thermoracks and adapters**  
For use with 96-well or 384-well plates and single 0.2 mL tubes. Thermoracks can be transported with gripper. On ThermoAdapters plates can be exchanged by the gripper.



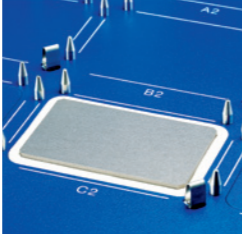
**ReservoirRack Module TC 5.0 mL**  
For 4 × Eppendorf Tubes® 5.0 mL. Up to 3 modules can be placed in ReservoirRack, temperature control possible.




**Thermoadapter DWP 96**  
For heating or cooling of 1 mL deep-well plates. Plates can be exchanged by the gripper.




**30 mL and 100 mL reagent reservoirs**  
The reagent reservoirs are PCR clean, autoclavable, and can be placed in the ReservoirRack. Both can be temperature controlled with special Reservoir Rack module.




**Integrated Thermal module**  
Modification kit for epMotion 5073 and 5075. For heating or cooling (0–110 °C) of thermoadapter, thermoblock, thermorack and ReservoirRack.




**Height adapter**  
Three height adapters enable exact height level adjustment and accelerated processing of microplates.




**ReagentRack**  
To hold the reagent tray from MagSep reagent kits.



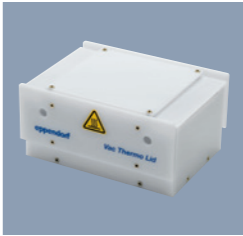
**Gripper**  
For transport of plates, thermoblocks and other labware on worktable of epMotion 5073 & 5075.




**TipHolder**  
Autoclavable, aluminum Tipholder for tip tray of reload system, reduces waste by up to 40 percent.



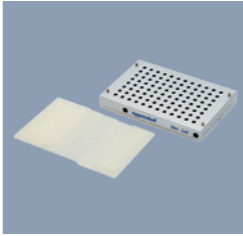
**Work surface adapter**  
Adapters can be screwed under workstation and increase working height by 5.5 cm up to a maximum of 16.5 cm.




**Vac Thermo lid**  
Use with Vacuum station to apply heated air to samples for improved drying.




**Liquid waste tub**  
Mounted in waste bin, the liquid waste tub separates liquid waste with working volume of 115 mL.



**Vacuum lid**  
For use with Vacuum station to apply vacuum to a reduced number of samples. Grippable and special sealing mats for lid available.



**PrepRack**  
For magnetic separation in 1.5/2.0 mL Safe-Lock tubes with magnetic finger module. 24 samples, temperature control possible.



**Reservoir 400 mL**  
Large-volume container in SBS format as e.g. liquid waste collection vessel for vacuum applications on the epMotion, autoclavable.



## Flexibility with Established Labware Data Base

The epMotion systems are known as a flexible and open automation platform for liquid handling applications. One part of its great flexibility is the compatibility with various different labware that are needed for specific customer

applications. Tubes, plates, vessels, adapters etc. from various vendors are compatible with the epMotion and our labware database with more than 1,200 files is constantly growing.

<b>Vendor</b>	Show all or select...
<b>Type</b>	Show all or select...
<b>Format</b>	Show all or select...
Search	

Please select a vendor, a format or/and a type and press "Search" to show Products! Combinations are also possible.

**Search filter for Labware download from epMotion VIP page**

> [www.eppendorf.com/automation](http://www.eppendorf.com/automation)



## epServices for epMotion® — Keep Your Process in Motion

### It's all about accuracy and reliability

The epMotion and its dispensing tools are precision instruments. As such, they require regular maintenance, which help prevent failures and keep your processes moving forward. Regular calibration of the dispensing tools will ensure system accuracy, precision and reliability.

Our Performance Plan options will allow you to maintain premium functioning of your epMotion over the life of the system. Eppendorf's highly skilled service technicians perform the adjustments and repairs to return your system to manufacturer specifications..

### Less effort, more impact

Our global certification services for epMotion GxP comply with FDA 21 CFR Part 11, EU GMP Annex 11, GLP and GAMP 5 regulations. We provide installation and Operational Qualification (IQ/OQ) services and the accompanying

documentation to assist in the validation process of the instrument and the software. Your employees will receive extensive training and system certification.

### epServices include:

- > Cleaning, inspection and system maintenance
- > Eppendorf quality spare parts
- > Software update as needed
- > Instrument adjustments as needed
- > Functional tests with service diagnostic methods
- > Calibration of dispensing tools according to EN ISO 8655
- > Calibration of level sensor, carrier arm, thermal module and vacuum manifold
- > Operational Qualification certification
- > Full documentation and certificates
- > 1 year extended warranty



> Further information: [www.eppendorf.com/epServices](http://www.eppendorf.com/epServices)  
For local offers please visit our local websites. Performance Plans and service products may vary according to country. Discuss with Service.

# Technical Specifications

Surface of systems		5070	5073	5075
	Width	39 in/98 cm	39 in/98 cm	56 in/140 cm
	Depth	24 in/62 cm	30 in/75 cm	30 in/75 cm
Dimensions of device		5070	5073	5075
	Width	26 in/65 cm	26 in/65 cm	43 in/107 cm
	Depth	19 in/48 cm	24 in/61 cm	24 in/61 cm
	Height	25 in/63 cm	27 in/67 cm	27 in/67 cm
CleanCap extra	Height	n.a.	4 in/10 cm	4 in/10 cm

## Weight (without packaging and accessories)

5070	45 kg	99.2 lb	5075l	85 kg	187.4 lb
5070f	33 kg	72.8 lb	5075t	87 kg	191.8 lb
P5073	50 kg	110 lb	5075v	86 kg	189.6 lb
M5073	57 kg	125.7 lb	5075vt	90 kg	198.4 lb
			5075m	88 kg	194 lb
CleanCap (5073)	5 kg	11 lb	CleanCap (5075)	10 kg	22.1 lb

Power supply		5070	5073	5075
Voltage		100–240 V $\pm 10\%$	100–240 V $\pm 10\%$	100–240 V $\pm 10\%$
Frequency		50–60 Hz $\pm 5\%$	50–60 Hz $\pm 5\%$	50–60 Hz $\pm 5\%$
Standby		50 W	50 W	50 W
Max output		150 W	600 W	700 W

## Pipetting performance specifications measured according ISO 8655

Single-channel tool	Volume	Systematic measurement error	Random measurement error
TS 50	50 $\mu\text{L}$	$\pm 1.2\%$	$\pm 0.4\%$
	1 $\mu\text{L}$	$\pm 15\%$	$\pm 5\%$
TS 300	300 $\mu\text{L}$	$\pm 0.6\%$	$\pm 0.3\%$
	20 $\mu\text{L}$	$\pm 4\%$	$\pm 2.5\%$
TS 1000	1000 $\mu\text{L}$	$\pm 0.7\%$	$\pm 0.15\%$
	40 $\mu\text{L}$	$\pm 5\%$	$\pm 1.5\%$

in pipetting mode, free jet, without pre-wetting, with distilled water, at 20 °C

## Typical pipetting performance (MVS data for epMotion 5070)\*

Single-channel tool	Volume	systematic measurement error	random measurement error
TS 50	50 $\mu\text{L}$	$\pm 0.6\%$	$\pm 0.1\%$
	1 $\mu\text{L}$	$\pm 5.4\%$	$\pm 1.6\%$
TS 300	300 $\mu\text{L}$	$\pm 0.7\%$	$\pm 0.13\%$
	20 $\mu\text{L}$	$\pm 0.9\%$	$\pm 0.2\%$
TS 1000	200 $\mu\text{L}$	$\pm 1.4\%$	$\pm 0.1\%$
	40 $\mu\text{L}$	$\pm 0.8\%$	$\pm 0.2\%$

\* Eppendorf application Note 168: »Evaluation of the Eppendorf epMotion® Pipetting Tools using the Artel MVS«

<b>Conductor</b>	<b>Systematic measurement error</b>	<b>Random measurement error</b>
X, Y, Z Positioning:	± 0.3 mm	± 0.1 mm
<b>Detector</b>		
Optical confocal infrared detector	contact-free detection of liquid levels, tools used, labware worktables, tip types and quantities	
Optical sensor	liquid surface must be 90 ±3° to the vertical plane of the optical sensor	
<b>Gripper</b>		
Carrying capacity	1200 g	
<b>Vacuum unit</b>		
Max output	35 NI/min	
Suction range	0.1–85 kPa	
Suction time	1 sec to 36 min	
<b>ThermoMixer</b>		
Mixing frequency	Off, 300–2000 rpm, optimized for labware and application	
Mixing amplitude	3 mm	
Temperature range	–15 °C below RT to 95 °C measured in labware at 75 % filling height	
Temperature homogeneity	≤ 10 % on the block	
Heating rate	5 °C/min, on the block	
Cooling rate	3 °C/min, on the block, above RT	
Setting range time	5 sec–120 min	
<b>Optional thermal module</b>		
Setting range time	1 min–120 min	
Setting range temperature	0 °C–110 °C ( 32°F–230°F)	
<b>CleanCap</b>		
HEPA filter	70–80 m³/h; class E10	
UV light	254 nm (UV-C)	
UV lamp power 1m distance	39 µW/cm²	

# Ordering Information

System ordering information does not apply for U.S.A. and Canada

Description of basic epMotion® devices for further configuration	Ordering no.
<b>Eppendorf epMotion® 5070</b> , basic device incl. epBlue™ software, housing, mouse, waste box, 50/60 Hz, 100–240 V	5070 000.280
<b>Eppendorf epMotion® 5070f</b> , basic device for use inside a cell culture bench or fume hood, incl. epBlue™ software, mouse, waste box, 50/60 Hz, 100–240 V	5070 000.281
<b>Eppendorf epMotion® P5073</b> , for automated PCR set-up, incl. Eppendorf EasyCon™ tablet, epBlue™ software and PCR-Assistants, TS 50, TS 300, Thermoblock and Rack 24 Eppendorf Safe-Lock, 50/60 Hz, 100–240 V	5073 000.000
<b>Eppendorf epMotion® P5073c</b> , for automated PCR set-up, incl. CleanCap, Eppendorf EasyCon™ tablet, epBlue™ software and PCR-Assistants, TS 50, TS 300, Thermoblock and Rack 24 Eppendorf Safe-Lock, 50/60 Hz, 100–240 V	5073 000.302
<b>Eppendorf epMotion® M5073</b> , for automated nucleic acid preparation of 1–24 samples with Eppendorf MagSep™ Kits, incl. Eppendorf EasyCon™ tablet, epBlue™ software and Prep-Assistants, TS 50, TS 1000, PrepRack, ReagentRack, Rack 24 Eppendorf Safe-Lock, 50/60 Hz, 100–240 V	5073 000.205
<b>Eppendorf epMotion® M5073c</b> , for automated nucleic acid preparation of 1–24 samples with Eppendorf MagSep™ Kits, incl. CleanCap, Eppendorf EasyCon™ tablet, epBlue™ software and Prep-Assistants, TS 50, TS 1000, PrepRack, ReagentRack, Rack 24 Eppendorf Safe-Lock, 50/60 Hz, 100–240 V	5073 000.400
<b>Eppendorf epMotion® 5075i</b> , basic device incl. epBlue™ software, mouse, waste box, 50/60 Hz, 100–240 V	5075 000.301
<b>Eppendorf epMotion® 5075t</b> , basic device incl. ThermoMixer®, epBlue™ software, mouse, waste box, 50/60 Hz, 100–240 V	5075 000.302
<b>Eppendorf epMotion® 5075v</b> , basic device incl. vacuum system, gripper, vac frame 2, vac frame holder, epBlue™ software, mouse, waste box, 50/60 Hz, 100–240 V	5075 000.303
<b>Eppendorf epMotion® 5075vt</b> , basic device incl. vacuum system, gripper, vac frame 2, vac frame holder, ThermoMixer®, epBlue™ software, mouse, waste box, 50/60 Hz, 100–240 V	5075 000.304
<b>Eppendorf epMotion® 5075m</b> , basic device incl. Eppendorf MagSep™ module, ThermoMixer®, epBlue™ software, mouse, waste box, 50/60 Hz, 100–240 V	5075 000.305

## Configuration options to be ordered with basic epMotion® devices

Configuration option description	Ordering no.	5070	5070f	P5073	P5073c	M5073	M5073c	5075i	5075t	5075v	5075vt	5075m
Eppendorf EasyCon™ tablet	5073 000.108	✓	✓	incl.	incl.	incl.	incl.	–	–	–	–	–
Eppendorf MultiCon™ PC controller incl. keyboard	5075 001.101	–	–	–	–	–	–	✓	✓	✓	✓	✓
Completely contained housing	5075 751.623	incl.	incl.	incl.	–	incl.	–	✓	✓	✓	✓	✓
CleanCap & completely contained housing	5075 751.607	–	–	–	incl.	–	incl.	opt.	opt.	opt.	opt.	opt.
Thermal module on position C1	5075 002.604	–	–	opt.	opt.	–	–	opt.	opt.	opt.	opt.	opt.
Thermal module on position C2	5075 002.612	–	–	–	–	–	–	opt.	opt.	opt.	opt.	opt.
Thermal module on position C3	5075 002.620	–	–	–	–	–	–	opt.	–	opt.	–	–
epBlue ID™, barcode & tracking software incl. manual barcode scanner	5075 002.701	–	–	–	–	–	–	opt.	opt.	opt.	opt.	opt.
epBlue GxP™, software for regulatory compliance	5075 002.728	–	–	–	–	–	–	opt.	opt.	opt.	opt.	opt.
PCR assistant software	5075 002.515	opt.	opt.	incl.	incl.	opt.	opt.	opt.	opt.	opt.	opt.	incl.
Prep assistant software	5075 002.523	–	–	–	–	incl.	incl.	–	–	–	–	incl.
LH assistant software	5075 002.507	incl.	opt.	–	–	–	–	incl.	opt.	opt.	opt.	opt.

Legend: ✓ = Please add this option for working configuration

incl. = Already included in this basic epMotion® device

– = Selection of this option is not possible for this basic epMotion® device

opt. = Add this option to increase functionality of this basic epMotion® device

Description	International Ordering no.	North America Ordering no.
<b>Dispensing tools</b>		
Highly precise pipetting heads, for use in the tool holder of the epMotion® workstation. Each dispensing tool is completely autoclavable at 121 °C, 1 bar for 20 min. A quality certificate for the measurement results accompanies each tool.		
TS 50, single-channel dispensing tool for the volume range 1–50 µL	5280 000.010	960001010
TS 300, single-channel dispensing tool for the volume range 20–300 µL	5280 000.037	960001028
TS 1000, single-channel dispensing tool for the volume range 40–1,000 µL	5280 000.053	960001036
TM 50-8, 8-channel dispensing tool for the volume range 1–50 µL	5280 000.215	960001044
TM 300-8, 8-channel dispensing tool for the volume range 20–300 µL	5280 000.231	960001052
TM 1000-8, 8-channel dispensing tool for the volume range 40–1,000 µL	5280 000.258	960001061
Holder for 6 dispensing tools	5075 774.003	960001109
<b>epT.I.P.S.® Motion pipette tips</b>		
Pipette tips in individual racks, for use with the epMotion®. Tip type and size are automatically recognized on the device. 96 epT.I.P.S.®/rack		
<b>Without filter</b>		
50 µL, sterile, volume range 1–50 µL, 10 × 96 tips in racks	0030 015.207	
300 µL, sterile, volume range 20–300 µL, 10 × 96 tips in racks	0030 015.223	
1,000 µL, sterile, volume range 40–1,000 µL, 10 × 96 tips in racks	0030 015.240	
50 µL, Eppendorf Quality™, volume range 1–50 µL, 10 × 96 tips in racks	0030 014.405	
300 µL, Eppendorf Quality™, volume range 20–300 µL, 10 × 96 tips in racks	0030 014.448	
1,000 µL, Eppendorf Quality™, volume range 40–1,000 µL, 10 × 96 tips in racks	0030 014.480	
50 µL, Reloads, Eppendorf Quality™, volume range 1–50 µL, Reloads, 12 × 2 trays with 96 tips	0030 014.421	
300 µL, Reloads, Eppendorf Quality™, volume range 20–300 µL, Reloads, 12 × 2 trays with 96 tips	0030 014.464	
1,000 µL, Reloads, Eppendorf Quality™, volume range 40–1,000 µL, Reloads, 12 × 2 trays with 96 tips	0030 014.502	
50 µL, SafeRacks, Eppendorf Quality™, volume range 1–50 µL, 10 × 96 tips in racks	0030 014.600	
1,000 µL, SafeRacks, Eppendorf Quality™, volume range 40–1,000 µL, 10 × 96 tips in racks	0030 014.642	
<b>With filter</b>		
50 µL, sterile, PCR clean, volume range 1–50 µL, 10 × 96 tips in racks	0030 015.215	
300 µL, sterile, PCR clean, volume range 20–300 µL, 10 × 96 tips in racks	0030 015.231	
1,000 µL, sterile, PCR clean, volume range 40–1,000 µL, 10 × 96 tips in racks	0030 015.258	
50 µL, PCR clean, volume range 1–50 µL, 10 × 96 tips in racks	0030014.413	
300 µL, PCR clean, volume range 20–300 µL, 10 × 96 tips in racks	0030 014.456	
1,000 µL, PCR clean, volume range 40–1,000 µL, 10 × 96 tips in racks	0030 014.499	
50 µL, Reloads, PCR clean, volume range 1–50 µL, Reloads, 12 × 2 trays with 96 tips	0030 014.430	
300 µL, Reloads, PCR clean, volume range 20–300 µL, Reloads, 12 × 2 trays with 96 tips	0030 014.472	
1,000 µL, Reloads, PCR clean, volume range 40–1,000 µL, Reloads, 12 × 2 trays with 96 tips	0030 014.510	
50 µL, SafeRacks, PCR clean, volume range 1–50 µL, 10 × 96 tips in racks	0030 014.618	
1,000 µL, SafeRacks, PCR clean, volume range 40–1,000 µL, 10 × 96 tips in racks	0030 014.650	
Tipholder for epMotion® reloadable tips	5075 751.399	
<b>Other consumables for epMotion®</b>		
<b>30 mL reservoir</b> , for use with reservoir rack, 5 × 10 large volume reservoirs, PCR clean	0030 126.505	960051009
<b>100 mL reservoir</b> , for use with reservoir rack, 5 × 10 large volume reservoirs, PCR clean	0030 126.513	960051017
<b>Reservoir 400 mL</b> , large reservoir in SBS format gippable, 10 pieces, e.g. for use in vacuum station	5075 751.364	960002229
<b>LiquidWasteTub</b> to mount in the waste box, autoclavable, working volume 115 mL	5075 751.500	
<b>Eppendorf MagSep™ Tissue gDNA Kit</b> , reagent kit for genomic DNA purification of 4 × 24 samples from cells & tissues, for use with ReagentRack on M5073 or 5075m	0030 450.000	
<b>Eppendorf MagSep™ Blood gDNA Kit</b> , reagent kit for genomic DNA purification of 4 × 24 samples from blood, for use with ReagentRack on M5073 or 5075m	0030 451.007	
<b>Eppendorf MagSep™ Viral DNA/RNA Kit</b> , reagent kit for viral DNA/RNA purification of 4 × 24 samples, for use with ReagentRack on M5073 or 5075m	0030 452.003	

Description	International Ordering no.	North America Ordering no.
<b>Reservoir rack modules TC</b>		
Reservoir rack modules are inserted in a reservoir rack. They can be temperature controlled with a thermal module for heating and cooling.		
<b>PCR 0.2 mL</b> , for 8 × 0.2 mL PCR tubes	5075 799.049	960002601
<b>Safe-Lock Tubes</b> , for 4 × 0.5/1.5/2 mL tubes	5075 799.081	960002620
<b>Tubes Ø 12 mm</b> , for 4 × Ø 12 mm tubes	5075 799.103	960002630
<b>Tubes Ø 16 mm</b> , for 4 × Ø 16 mm tubes	5075 799.120	960002640
<b>Eppendorf Tubes® 5.0 mL</b> , for 4 × 5 mL tubes	5075 799.340	
<b>15 mL Tubes »conical«</b> for 4 × Ø 17 mm tubes	5075 799.162	960002650
<b>50 mL Tubes »conical«</b> for 2 × Ø 29 mm tubes	5075 799.189	960002660
<b>Reservoir adapter 30 mL</b> , for 1 × epMotion® reservoir 30 mL	5075 799.146	960002670
<b>Reservoir adapter 100 mL</b> , for 1 × epMotion® reservoir 100 mL	5075 799.260	960002680
<b>Racks</b>		
For individual glass or plastic tubes, no temperature control		
Ø 12 mm × 60 mm max. length	5075 792.109	960002351
Ø 12 mm × 100 mm max. length	5075 763.001	960002059
Ø 13 mm × 60 mm max. length	5075 792.087	960002342
Ø 13 mm × 100 mm max. length	5075 762.005	960002041
Ø 14 mm × 60 mm max. length	5075 792.060	960002334
Ø 14 mm × 100 mm max. length	5075 792.001	960002369
Ø 15 mm × 60 mm max. length	5075 792.044	960002326
Ø 15 mm × 100 mm max. length	5075 792.028	960002377
Ø 16 mm × 60 mm max. length	5075 776.006	960002164
Ø 16 mm × 100 mm max. length	5075 760.002	960002032
Ø 17 mm × 60 mm max. length	5075 775.000	960002156
Ø 17 mm × 100 mm max. length	5075 761.009	960002024
<b>Rack for 24 x HPLC tubes</b> , Ø 12 mm × 40 mm max. length	5075 792.125	960002380
<b>Rack for 96 x 1.5/2.0 mL screw-cap tubes</b> , requires 2 positions on the deck	5075 791.005	960002318
<b>Rack for 24 Safe-Lock tubes 0.5 mL/1.5 mL/2.0 mL</b> , cannot be tempered, with adapter sleeves for 0.5 mL	5075 751.453	960002511
<b>Rack for 24 Safe-Lock tubes 1.5 mL/2.0 mL</b> , no temperature control	5075 751.275	
<b>ReservoirRack</b> , for ReservoirRack Modules TC and max. 7 of 30 mL and 100 mL reagent reservoirs	5075 754.002	960002148
<b>ReservoirRack 3</b> , for max. three 30 mL or 100 mL reservoirs, only for 5075t, 5075m	5075 754.070	
<b>Accessories for PCR/real-time PCR and NGS applications</b>		
<b>Rack Smart</b> , for holding one tube rack of SmartCycler® reaction tubes	5075 790.009	960002520
<b>Rack LC</b> , for holding up to 96 × 20 µL or 100 µL LightCycler® capillaries, for use with, e.g., Centrifuge 5804/5804 R or 5810/5810 R, set of 2	5075 795.000	960002511
<b>Thermorack CB 100 µL</b> , for holding up to 384 × 0.1 mL strip tubes in the Corbett Research Rotor-Gene 3000	5075 767.031	960002500
<b>Thermoadapter for PCR plates, 96-well, skirted</b> , for use with 96 × 0.2 mL tubes or a 96-well PCR plate	5075 787.008	960002199
<b>Thermoadapter for PCR plates, 384-well, skirted</b> , for use with a 384-well PCR plate	5075 788.004	960002202
<b>Thermoadapter Frosty</b> , combination of height adapter and PCR-Cooler for cooling of skirted PCR plates	5075 789.000	960002300
<b>Thermoblock for PCR plates, 96-well</b> , for heating or cooling of PCR plates	5075 766.000	960002083
<b>Thermoblock for PCR plates, 384-well</b> , for heating or cooling of PCR plates	5075 767.007	960002091
<b>Thermoadapter LC</b> , designed to hold the sample cartridge of the MagNa Pure® LC System	5075 751.305	5075751305
<b>Thermorack for 24 × 0.5 mL Safe-Lock Tubes</b> , for a supply of 24 test tubes, temperature control	5075 769.000	960002067
<b>Thermorack for 24 × 1.5/2 mL Safe-Lock Tubes</b> , for a supply of 24 test tubes, temperature control	5075 771.004	960002075
<b>Thermorack TMX</b> for 24 Safe-Lock tubes, for a supply of 0.5 mL tubes on ThermoMixer® of M5073, 5075t, 5075vt, 5075m, temperature control no separation	5075 751.160	960002070
<b>Thermorack TMX</b> for 24 Safe-Lock tubes, for a supply of 1.5/2 mL tubes on ThermoMixer® of M5073, 5075t, 5075vt, 5075m, temperature control no separation	5075 751.186	960002080
<b>Thermoadapter for Deep Well Plates</b> , 96 wells/1000 µL	5075 751.054	960002391

Description	International Ordering no.	North America Ordering no.
<b>Accessories for vacuum station</b>		
<b>Vac frame holder</b>	5075 778.009	960002237
<b>Vac lid</b>	5075 779.005	960002245
<b>Mat</b> , for vacuum lid	5075 793.008	960002407
<b>Vac frame 1</b> , for skirted filter plates	5075 784.009	960002253
<b>Vac frame 2</b> , for semi-skirted filter plates	5075 785.005	960002261
<b>Collection Plate Adapter</b> , for handling collection microtubes in microtube racks	5075 785.030	960002531
<b>Channeling Plate Adapter 96</b> , for vacuum-processing foaming solutions through multiwell plates, set of 10	5075 794.004	960002540
<b>Vac Thermo Lid</b> , for effective drying of filter plates in epMotion® 5075 VAC vacuum chamber Note: additional thermal module required	5075 796.007	960002551
<b>Other accessories</b>		
<b>Gripper</b> , incl. holder, for transporting plates on the worktable and automatic operation of the vacuum manifold, for 5073 and 5075	5282 000.018	960002270
<b>Waste container</b> , receptacle for used pipette tips	5075 753.006	960002016
<b>PrepRack</b> for 24 Safe-Lock tubes 2 mL, for nucleic acid preparation with Eppendorf MagSep™ kits	5073 751.006	
<b>ReagentRack</b> to hold the reagent tray of the Eppendorf MagSep™ Kit	5075 751.429	
<b>Height adapter 85 mm</b> for uniform levels of labware; enables faster processing of the plate	5075 751.003	960002105
<b>Height adapter 55 mm</b> for uniform levels of labware; enables faster processing of the plate	5075 752.000	960002113
<b>Height adapter 40 mm</b> for uniform levels of pipette tips; enables faster processing of the plate	5075 755.009	960002121
<b>Work surface adapter</b> to raise the epMotion® instrument by 5.5 cm	5070 752.001	
<b>Adapter sleeves</b> , 1 set = 25 pieces for reconfiguration of the thermo rack (1.5/2.0 mL) for use with 0.5 mL tubes	5075 772.000	960002172
<b>Tipholder for epMotion® reloadable tips</b>	5075 751.399	
<b>LiquidWasteTub</b> to mount in the waste box, autoclavable, working volume 115 mL	5075 751.500	
<b>Software and upgrade options</b>		
<b>epBlue ID™ software and hardware upgrade set</b> , for PC versions (SN < 4000), barcode support includes software, barcode reader and stand, not compatible with epMotion® panel or EasyCon versions	5075 000.830	
<b>epBlue ID™ software and hardware upgrade set</b> , for MultiCon versions (epMotion® SN > 4000), barcode support includes software, barcode reader and stand, not compatible with epMotion® panel or EasyCon versions	5075 002.701	
<b>epBlue GxP™ software upgrade</b> , for use in regulated process environments (according to GLP, GMP, 21 CFR), for PC versions (SN < 4000), with epBlue™ GxP software, corresponding firmware, USB hardware key, certificates. Not compatible with epMotion® panel or EasyCon versions	5075 000.849	
<b>epBlue GxP™ software upgrade</b> , for use in regulated process environments (according to GLP, GMP, 21 CFR), for MultiCon versions (epMotion® SN > 4000), with epBlue™ GxP software, corresponding firmware, USB hardware key, certificates. Not compatible with epMotion® panel or EasyCon versions	5075 002.728	
<b>epMotion® Editor</b> , incl. editor key, software package for creating and editing applications and printing and archiving program runs on the PC	5075 014.009	960000269
<b>epMotion® Editor</b> , additional license	5075 015.200	960000300
<b>Thermal module</b> , for heating or cooling of thermoadapters, thermoblock and thermoracks, for P5073 and 5075	5075 757.001	960002181
<b>VAC</b> , for retrofitting a 5075 LH or 5075I version into a VAC version	5075 000.610	960021011
<b>TMX</b> , for retrofitting a 5075 LH version into a 5075 TMX version	5075 000.628	960021055
<b>ThermoMixer®</b> , for retrofitting a 5075I version into a 5075t version with ThermoMixer®, for epMotion® 5075I with serial numbers >4,000	5075 000.630	

**Your local distributor: [www.eppendorf.com/contact](http://www.eppendorf.com/contact)**

Eppendorf AG · 22331 Hamburg · Germany  
[eppendorf@eppendorf.com](mailto:eppendorf@eppendorf.com) · [www.eppendorf.com](http://www.eppendorf.com)  
Eppendorf North America, Inc. · Phone: 800-645-3050  
[info@eppendorf.com](mailto:info@eppendorf.com) · [www.eppendorfn.com](http://www.eppendorfn.com)  
Eppendorf Canada Ltd. · Phone: 800-263-8715  
[canada@eppendorf.com](mailto:canada@eppendorf.com) · [www.eppendorfn.com](http://www.eppendorfn.com)

[www.eppendorf.com/automation](http://www.eppendorf.com/automation)

Only for epMotion M5073, M5073c and 5075m: Limited Use Label License

Notice to purchaser; limited license for research use only This product and its use may be covered by one or more patents owned by Gen-Probe Incorporated. The purchase price for this product includes only limited, nontransferable rights under certain claims of certain patents owned by Gen-Probe Incorporated to use this product for research purposes only. No other rights are conveyed. Purchaser is not granted any rights under patents of Gen-Probe Incorporated to use this product for any commercial use. Further information regarding purchasing a license under patents of Gen-Probe Incorporated to use this product for any other purposes, including, without limitation, for commercial use, may be obtained by contacting Gen-Probe Incorporated, Attn: Business Development Department, 10210 Genetic Center Drive, San Diego, California 92121-4362, U.S.A.

MVS® is a registered trademark of Artel. MagNa pure® is a registered trademark of Roche.

Eppendorf®, the Eppendorf logo, epMotion®, Eppendorf Tubes®, epT.I.P.S.® and ThermoMixer® are registered trademarks of Eppendorf AG, Hamburg, Germany.

epBlue™, Eppendorf MultiCon™, Eppendorf EasyCon™, Eppendorf Quality™, Eppendorf MagSep™ and epServices Logo™ are a trademark of Eppendorf AG, Hamburg, Germany. All rights reserved, including graphics and images.  
Order No.: A50XX13020/GB1/12T/0913/CCHH/K&R